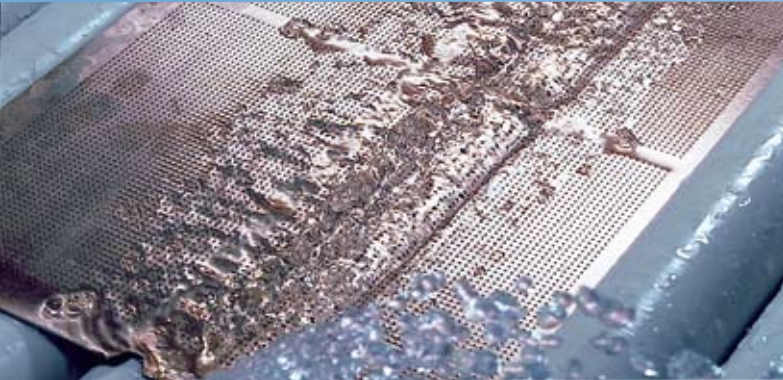


PCB / PCM

Höllmüller EVOLUTION
Desmear

R | E | N | A | ●



Efficient cleaning and conditioning of holes

Special forced flood systems are production proven solutions for reliable plated through-holes and blind vias.

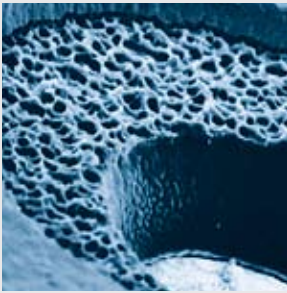
Areas of application

- Removal of residues originated from the heat of drilling and from materials remaining on the capture pad from laser drilling
- Fitting halogen free and lead free capable materials
- Suitable for flex, rigid-flex and multilayers
- SI Carrier, HDI, advanced HDI compatible: micro and stacked vias on FR4, High TG, BT, Teflon etc.

Features and benefits

- SST module construction for Sweller and Desmear
- Operating elements clearly placed and easily accessible
- Specific designed fluid dynamics for uniform results
- "Tsunami" forced flood system with HDF technology
- Automatic cleaning cycles
- Integrated electrolytic regeneration of permanganate
- Energy saving design by insulated modules
- Same process condition each panel
- Small sumps with sloped bottoms to drain



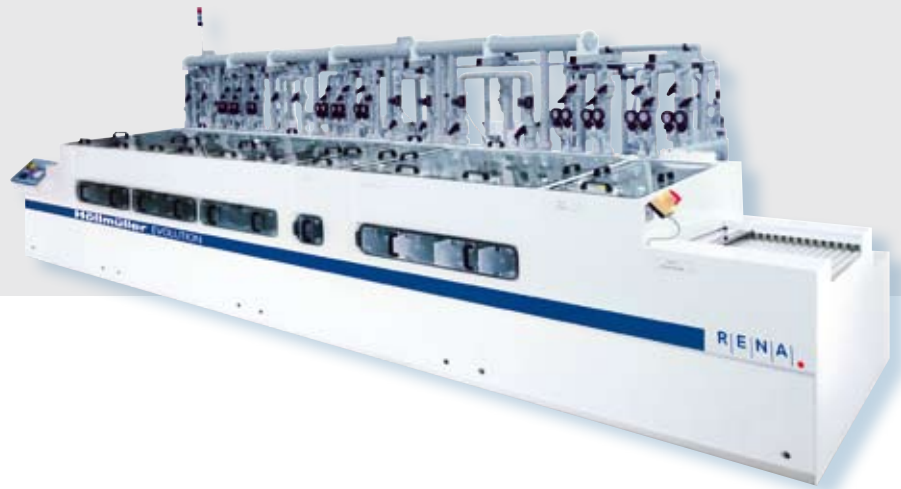


REM
hole preparation



Automatic
cleaning

RENA



Standard configuration of 1 m/min EVOLUTION Desmear System

